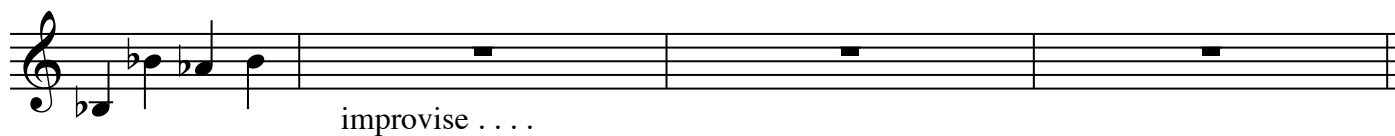
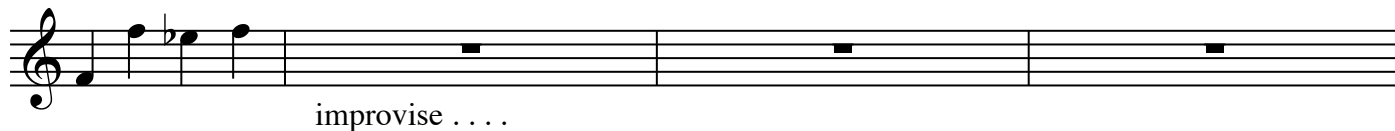
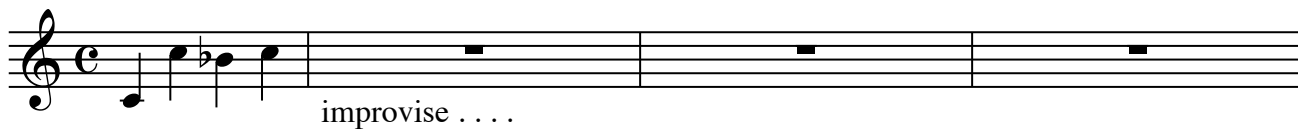


Robot 7ths



continue until you come back to C

Reinforces:

Circle of 5ths

Interval of m7 used in Dom 7th chords

Instructions:

Play first measure as written, then improvise using those notes for 3 more measures

Teacher can play an accompaniment with that harmony (dominant 7th)

For piano students, student can also play LH accompaniment during RH intervals

Dueling 5ths

Musical notation for 'Dueling 5ths' showing two staves (treble and bass clef) with chords and a 'continue...' instruction. The first three measures show chords in both hands. The fourth measure has a 'continue...' instruction. The fifth measure shows a final chord in both hands.

Musical notation for 'Dueling 5ths' showing two staves (treble and bass clef) with chords and a 'continue...' instruction. The first three measures show chords in both hands. The fourth measure has a 'continue...' instruction. The fifth measure shows a final chord in both hands.

Reinforces:

- 5ths
- moving up and down keyboard comfortably
- improvisatory skills (see below)

Instructions: Play as written, then try variations:

- broken (up or down or both)
- multiple octaves (copy the first one up an octave or 2)
- various rhythmic patterns
- various combinations of blocked/broken
- add middle notes (3rds) for thicker texture
- play in a different order to make a chord progression; instead of going up the scale 1 2 3 4 5 6 7 8, try:
1 4 7 3 6 2 5 1 (alternating up 4th/down 5th)
- think of others!

Flat Tire Scales



Flat Tire Scales instructions

Play each one 1, 2, or more octaves in the RH

LH or teacher accompaniment is ii^7 and V^7 for whatever key you're in

The image shows a single staff of music in treble clef with a key signature of one flat (Bb). The scale is divided into four measures, each with a specific chord indicated above and below the staff. The notes in each measure are: Measure 1: G4, A4, Bb4, C5; Measure 2: D5, E5, F5, G5; Measure 3: G5, F5, E5, D5; Measure 4: C5, Bb4, A4, G4. The chords are: ii^7 (Gm7) above and Gm7 below; V^7 (C7) above and C7 below; ii^7 (Gm7) above and Gm7 below; V^7 (C7) above and C7 below.

After you're secure with the scale(s), begin improvising in that "key"